

## Country fact sheet Greece



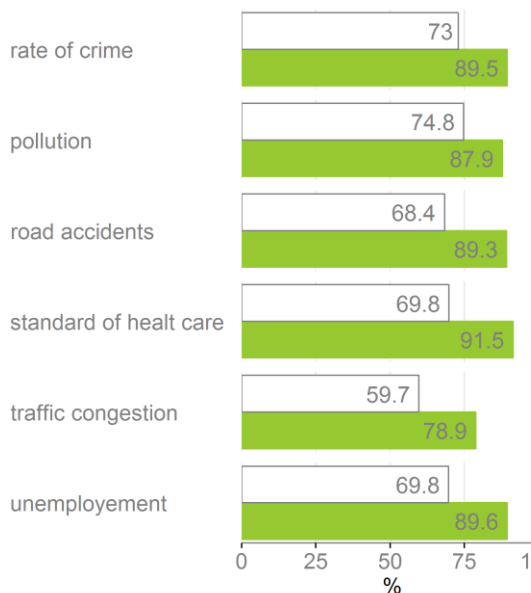
### ESRA 2015 results

The ESRA project is a joint initiative of research institutes in 17 European countries aiming at collecting comparable national data on road users' opinions, attitudes and behaviour with respect to road traffic risks. A common questionnaire was developed in English (UK) and translated into 20 different country-language versions. The themes covered in the survey are: attitude towards unsafe traffic behaviour, behaviour of other road users, subjective safety and risk perception, involvement in road crashes, reported police checks and perceived likelihood of getting caught for traffic offences, self-declared (unsafe) behaviour in traffic, support for road safety policy measures and use of different modes of transportation.

Data collection took place simultaneously in all countries in June/July 2015. In total, ESRA gathered data from over 17,000 road users, including almost 11,000 frequent car drivers. An overview of the project and the results are available on [www.esranet.eu](http://www.esranet.eu). The following figures show a core set of variables in which Greece (green) is compared with the European ESRA mean (white).

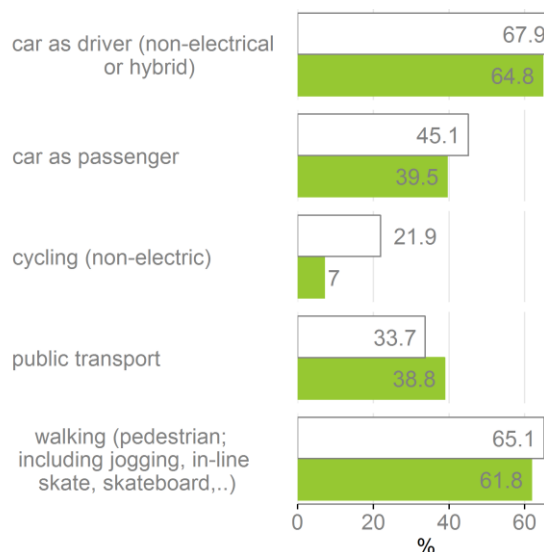
#### General RS

How concerned are you about each of the following issues? (4-point scale, 1=very concerned to 4=not at all concerned) - % of respondents feeling (very) concerned (1-2)



#### Mode of transportation

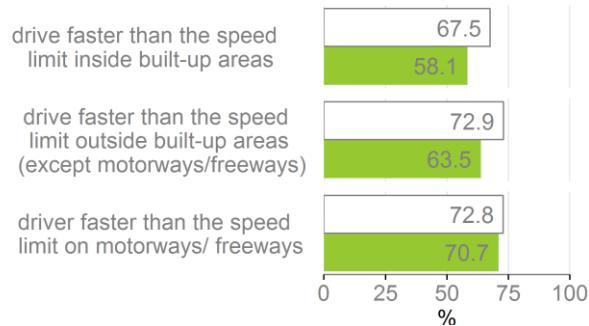
What were your most frequent modes of transport during the last 12 months? - % of respondents choosing this mode as one of their top 3 transportation mode



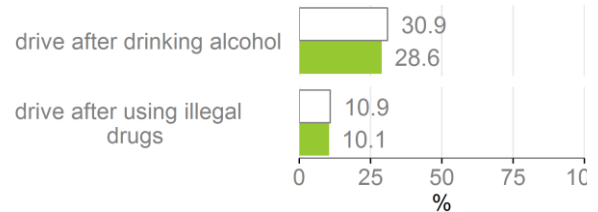
## Self-reported behaviour

In the past 12 months, as a road user, how often did you...? (5-point scale, 1=never to 5=(almost) always) - % at least once (2-5)

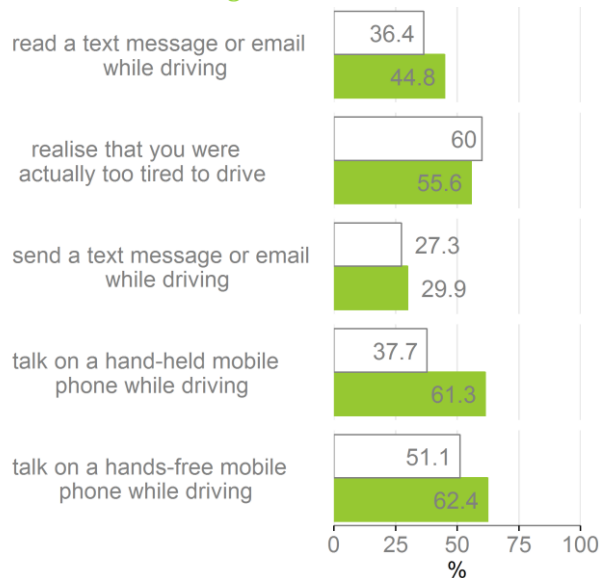
### Speed



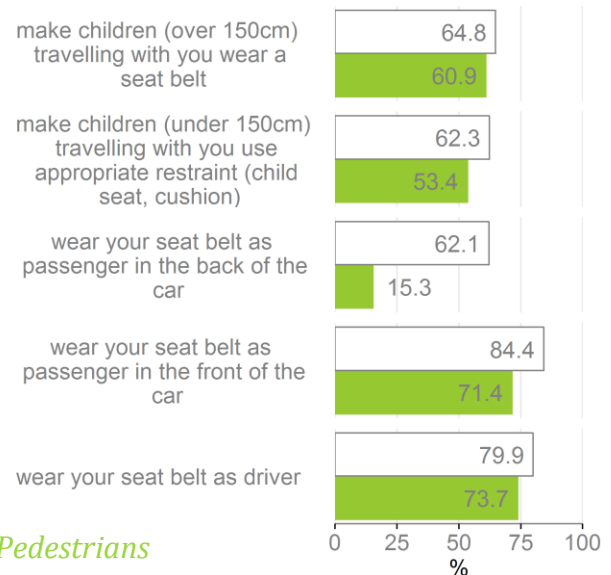
### DUI



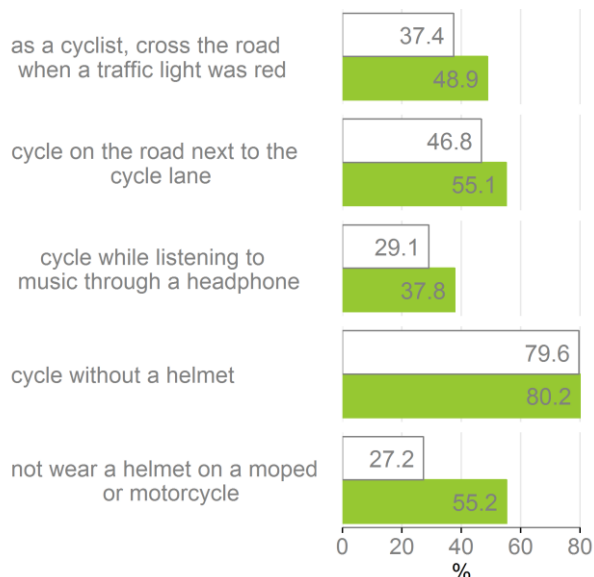
### Distraction & Fatigue



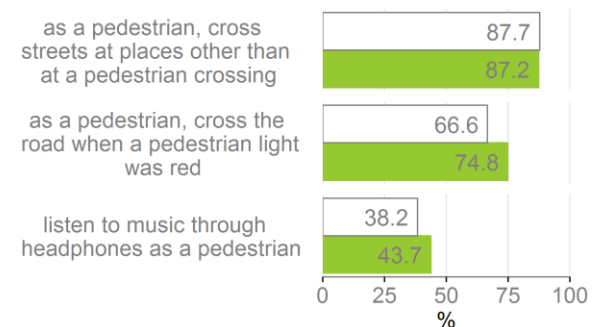
### Seat belt and Child restraint systems<sup>1</sup>- % almost always (5)



### Cyclists & Motorcyclists



### Pedestrians

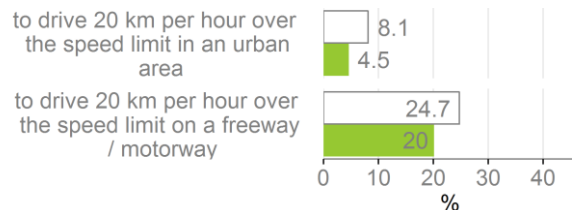


<sup>1</sup> The seatbelt related items describe save behaviour – in contrast with the other items

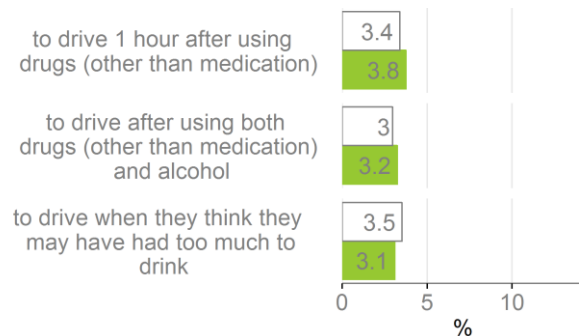
## Acceptability – personal

How acceptable do you, personally, feel it is for a driver...? (5-point scale, 1=unacceptable to 5=acceptable) - % (rather) acceptable (4-5)

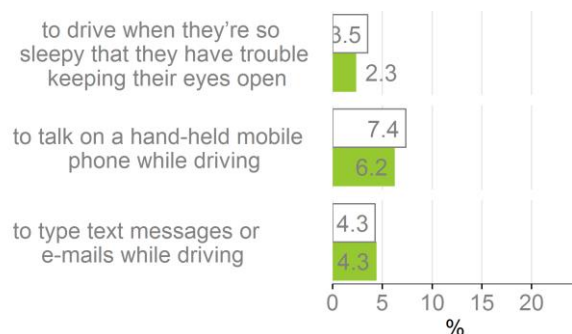
### Speed



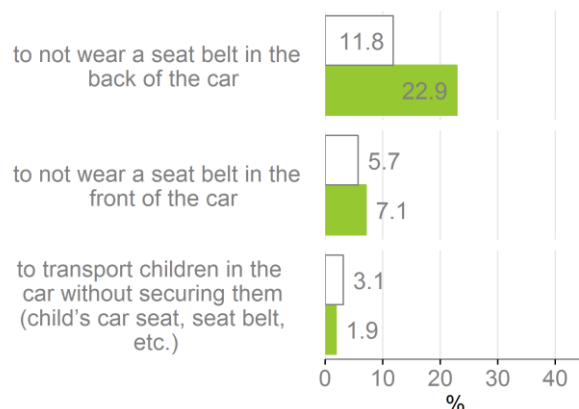
### DUI



### Distraction & Fatigue

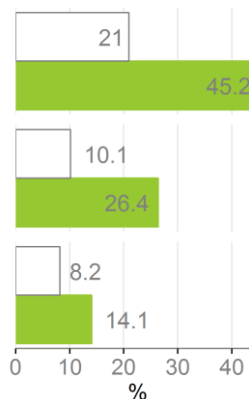
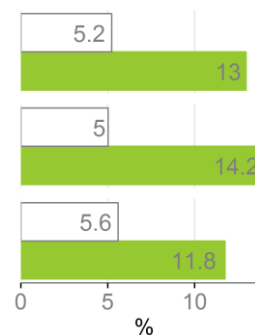
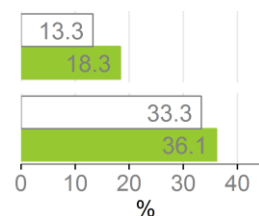


### Seat belt and Child restraint systems



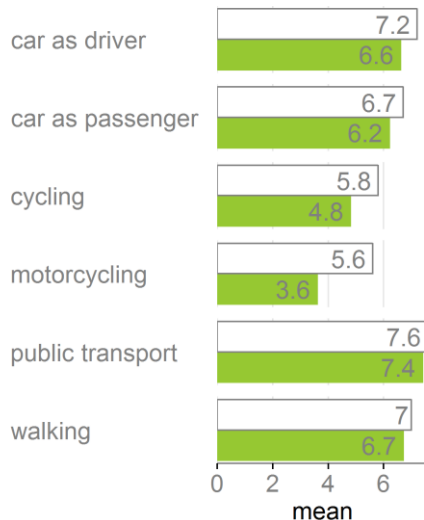
## Acceptability- others

Where you live, how acceptable would most other people say it is for a driver...? (5-point scale, 1=unacceptable to 5=acceptable) - % (rather) acceptable (4-5)



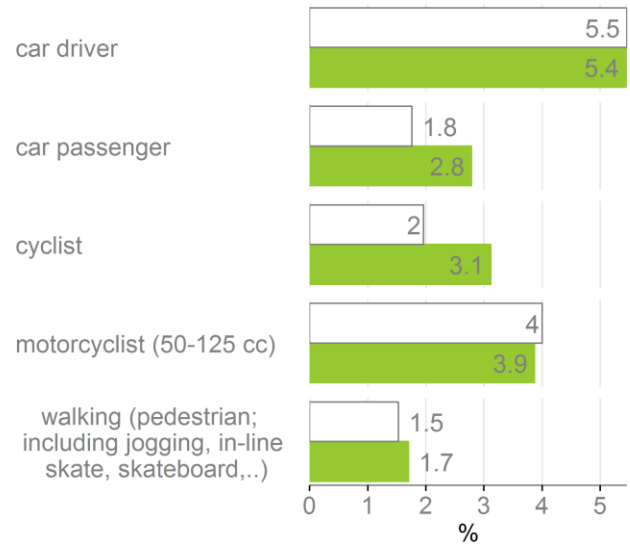
## (Un)Safety feeling

How (un)safe do you feel when using the following transport modes...? (11-point scale, 0=very unsafe to 10 very safe) - mean of the 11-point scale



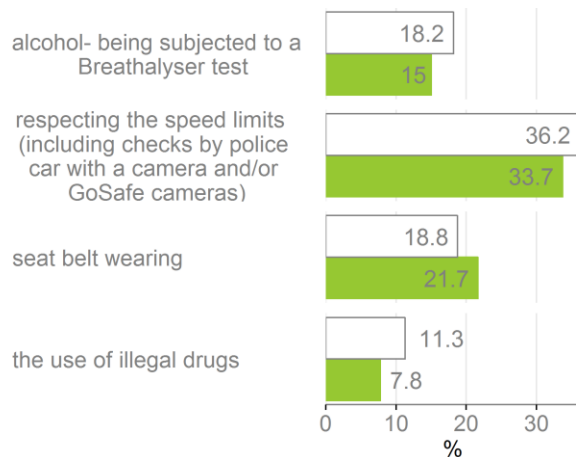
## Involvement in road crashes

In the past three months have you been involved in a road traffic accident as...? - % at least once

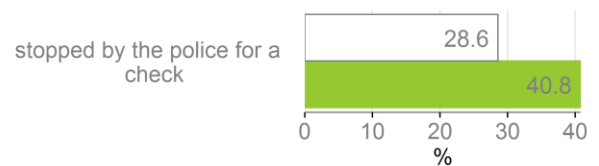


## Enforcement

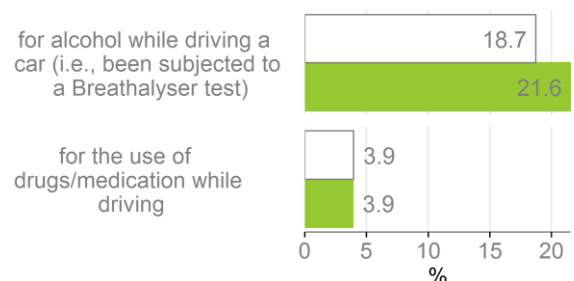
On a typical journey, how likely is it that you (as a driver) will be checked by the police for...? (5-point scale, 1=very small chance to 5 (almost) always) - % (very) big chance



In the past 12 months, how many times have you been stopped by the police for a check? - % at least once



In the past 12 months, how many times were you checked by the police...? - % at least once



## Background Data

Basic data of Greece in relation to the European average<sup>2</sup>.

(Source: Eurostat)

### Exposure

	year	EL
total length of roads (km)	NA	NA
total length of motorways (km)	NA	NA
vehicle kilometres (total in millions)	NA	NA
motorisation rate (Cars/1 000 inhab.)*	2003	348

\* Source: Eurostat

### Persons killed in road accidents by age (CARE database)

ages	year	EL		EU	
		absolute number	% of the age category	absolute number	% of the age category
0-14	2013	17	2.0	673	2.6
15-17	2013	27	3.1	622	2.4
18-24	2013	112	13.1	3813	14.7
25-49	2013	319	37.2	9236	35.7
50-64	2013	149	17.4	5121	19.8
≥65	2013	234	27.3	6423	24.8
TOTAL	2013	858	100.0	25888	100.0

European sum computed with the most recent available year by country (2009: BG, EE; 2010: MT, SK; 2012: IE; 2013: BE, DK, EL, ES, FI, FR, HU, IT, LT, NL, PL, PT, SE, SI; others: 2014)

### Persons killed in road accidents by transport mode (CARE database)

Mode of transportation	year	EL	EU
		absolute number	absolute number
car (including taxi)	2013	347	11768
moped	2013	25	737
motor cycle	2013	271	3776
pedal cycle	2013	15	2108
pedestrian	2013	151	5681

European sum computed with the most recent available year by country (2009: BG; 2010: MT; 2013: EL; IE; SI, SI; others: 2014)

## Population

	year	EL	EU
population (M. inhab.)	2014	10.93	502.7
density (inhab./km <sup>2</sup> )	2014	83.30	117.2

## Age Distribution

ages	year	EL	EU
0-14	2014	14.7	15.6
15-24	2014	10.4	11.3
25-49	2014	35.5	34.7
50-64	2014	19.0	19.8
65-79	2014	14.5	13.4
≥80	2014	6.0	5.1

% of the population

## Individuals' level of internet skills<sup>3</sup>

level	year	EL	EU
low	2013	21	30
medium	2013	30	35
high	2013	12	12

% of the total number of individuals aged 16 to 74

Low level: Individuals who have carried out 1 or 2 of the 6 internet-related items.

Medium level: Individuals who have carried out 3 or 4 of the 6 internet-related items.

High level: Individuals who have carried out 5 or 6 of the 6 internet-related items.

<sup>2</sup> The European average is based on the EU-27: Austria, Belgium, Bulgaria, Cyprus, Czech Republic, Denmark, Estonia, Finland, France, Germany, Greece, Hungary, Ireland, Italy, Latvia, Lithuania, Luxembourg, Malta, the Netherlands, Poland, Portugal, Romania, Slovak Republic, Slovenia, Spain, Sweden and the United Kingdom.

<sup>3</sup> The six internet-related activities which were used to group the respondents were: (a) use of a search engine to find information; (b) send an e-mail with attached files; (c) post messages to chat rooms, newsgroups or any online discussion forum; (d) use the internet to make telephone calls; (e) use peer-to-peer file sharing for exchanging movies, music etc.; (f) create a web page.

Please refer to this document as: Belgian Road Safety Institute (2016). Country fact sheet Greece. ESRA project (European Survey of Road users' safety Attitudes). Brussels, Belgium: Belgian Road Safety Institute.

Report number: 2016 - F - 06 - EN (D/2016/0779/37)

